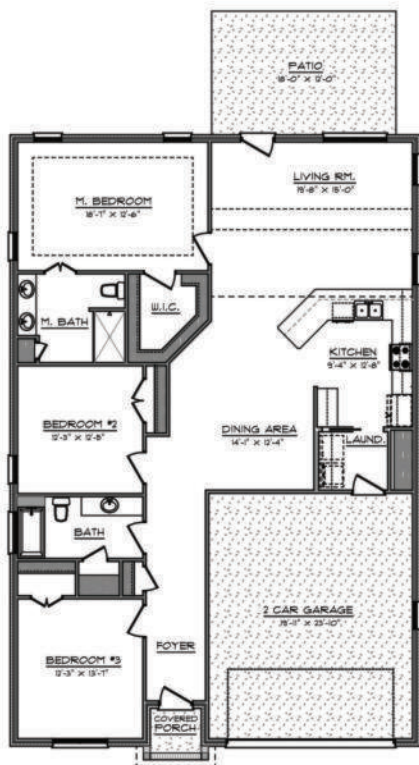




Villas  
at  
Whisper Creek



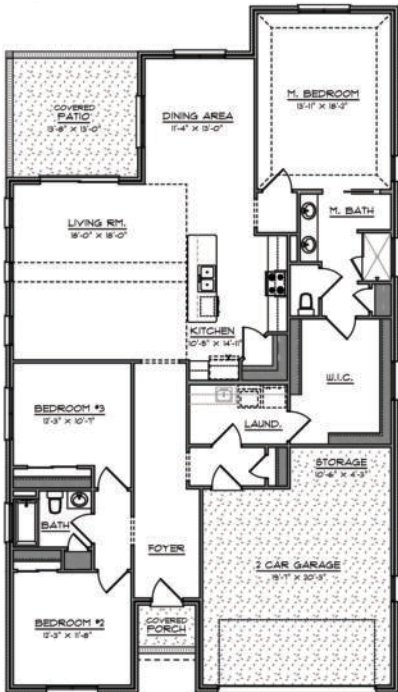
FIRST FLOOR PLAN

## INCLUDED

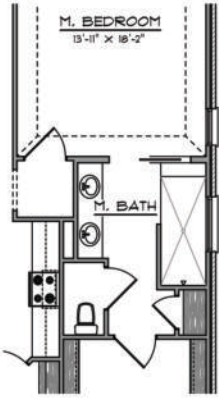
- One Level Living
- 3 Bedrooms, 2 Baths, 2 Car Garage
- Approx. 1900 Heated SF
- Open Concept Living, Dining, & Kitchen
- Rinnai Tank-Less Water Heater
- Natural Gas Community
- Exterior Maintenance Included
- CAPS Certified/Aging-In-Place Builder
- Low Maintenance Brick & Siding Exterior

Floorplans are for conceptions that may vary in detail from actual home. Builder reserves the right to alter floorplans and specifications without notice or obligation. Room sizes are approximate.





FIRST FLOOR PLAN



OPTIONAL LUXURY SHOWER

## INCLUDED

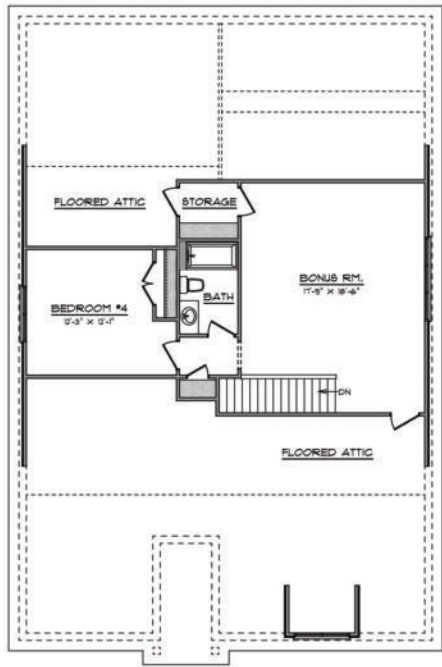
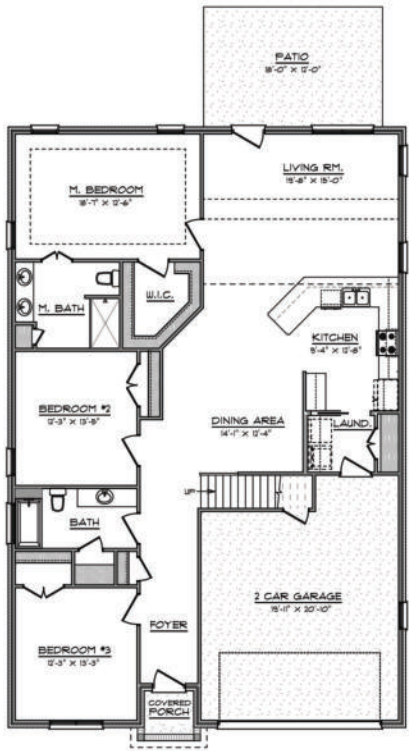
- One Level Living
- 3 Bedrooms, 2 Baths, 2 Car Garage
- Approx. 2050 Heated SF
- Open Concept Living, Dining, & Kitchen
- Covered Back Patio
- Rinnai Tank-Less Water Heater
- Natural Gas Community
- Exterior Maintenance Included
- CAPS Certified/ Aging-In-Place Builder
- Low Maintenance Brick & Siding Exterior

Floorplans are for conceptions that may vary in detail from actual home. Builder reserves the right to alter floorplans and specifications without notice or obligation. Room sizes are approximate.





Villas  
at  
Whisper Creek



**INCLUDED**

